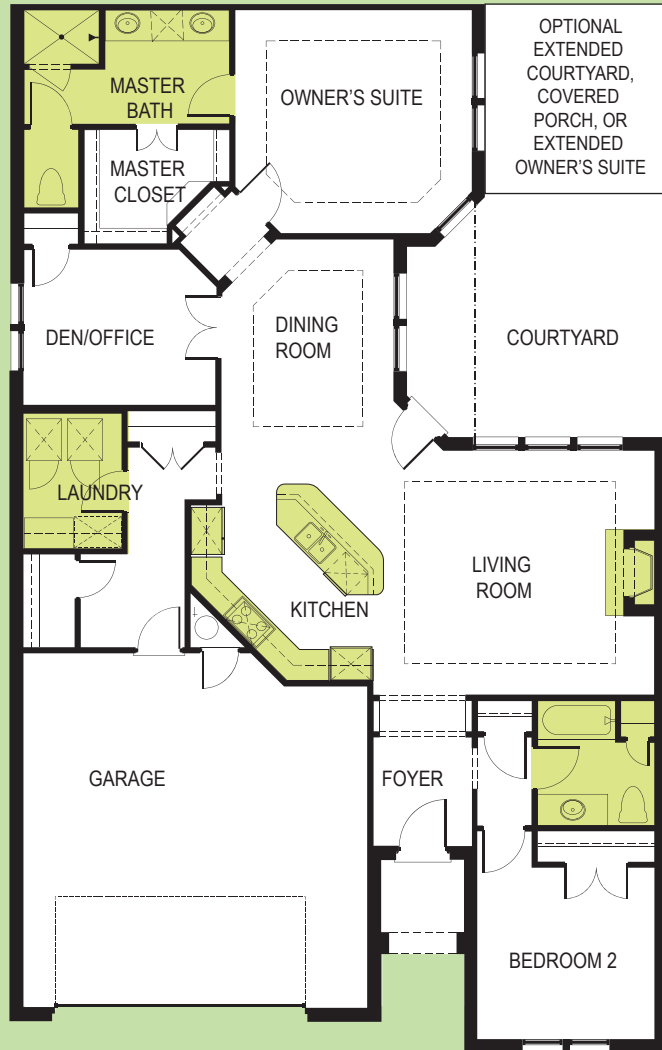


# Portico

2 BEDROOM / 2 BATHROOM / OVER SIZED GARAGE



## Approximate Room Dimensions

Living Room	16' X 16'
Kitchen	16' X 14'
Dining Room	12' X 12'
Owner's Suite	15' X 15'
Owner's Bath	13' X 15'
Bedroom 2	11' X 11'
Den/Office	12' X 10'
Garage	22' X 23'

Living Square Footage 1800

## Home Features

The Classic Courtyard home collection combines the convenience of single-story living with lots of privacy for each resident.

- Nine foot ceilings throughout with Ten foot tray ceilings in certain areas
- Large eat-in kitchen
- Large owner's suite with walk-in closet
- Multiple flooring options available
- Courtyard views from owner's suite, den, dining room, kitchen, and living room
- Courtyard access from living room, access from owner's suite optional
- Optional screened or covered porch, or expanded owner's suite
- Extra large garage with storage area above garage
- Optional courtyard features: fire pits, fountains, pavers, trellises, arbors, and outdoor kitchens

Floor plans are for illustration purposes only. Some features and specifications may vary depending on the architectural style.  
© Epcon Communities Franchising, Inc. 2012

