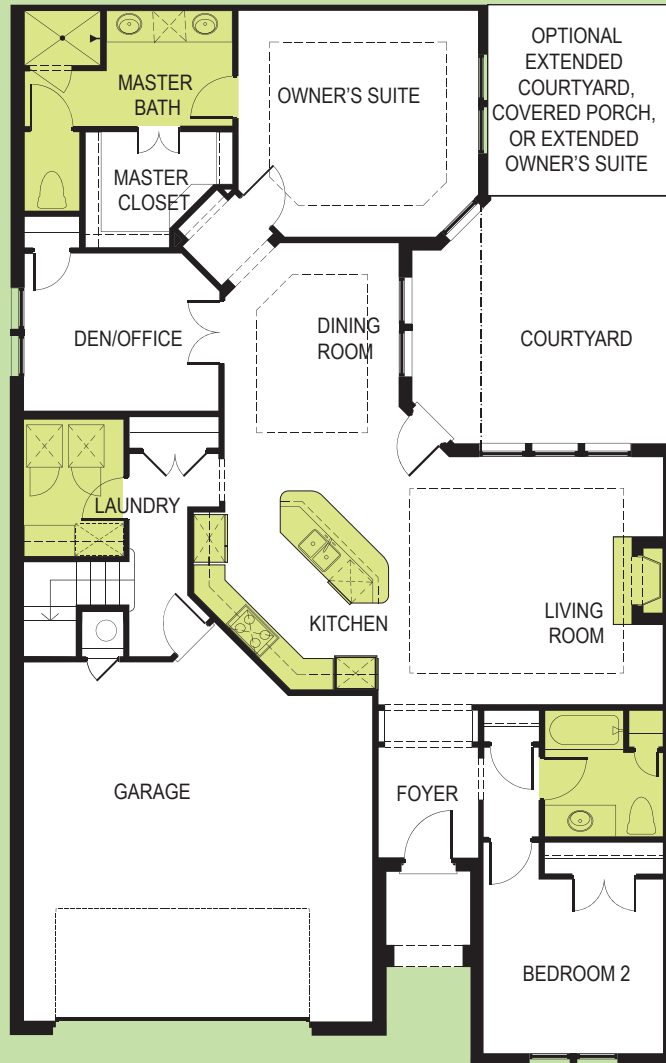


Portico

3 BEDROOM / 3 BATHROOM / WITH BONUS SUITE



Approximate Room Dimensions

Living Room	16' X 16'
Kitchen	16' X 14'
Dining Room	12' X 12'
Owner's Suite	15' X 15'
Owner's Bath	13' X 15'
Bedroom 2	11' X 11'
Den/Office	12' X 10'
Garage	22' X 23'
Courtyard	840 Sq ft.

1st Floor Living	1,801
2nd Floor Living	689
Total Footage	2490

Home Features

The Classic Courtyard home collection combines the convenience of two-story living with lots of privacy for each resident.

- Nine foot ceilings throughout with Ten foot tray ceilings in certain areas
- Large eat-in kitchen
- Large owner's suite with walk-in closet
- Multiple flooring options available
- Courtyard views from owner's suite, den, dining room, kitchen, and living room
- Courtyard access from living room, access from owner's suite optional
- Optional screened or covered porch, or expanded owner's suite
- Extra large garage
- Optional courtyard features: fire pits, fountains, pavers, trellises, arbors, and outdoor kitchens
- Second Floor Bonus Suite

Floor plans are for illustration purposes only. Some features and specifications may vary depending on the architectural style.
© Epcon Communities Franchising, Inc. 2012

