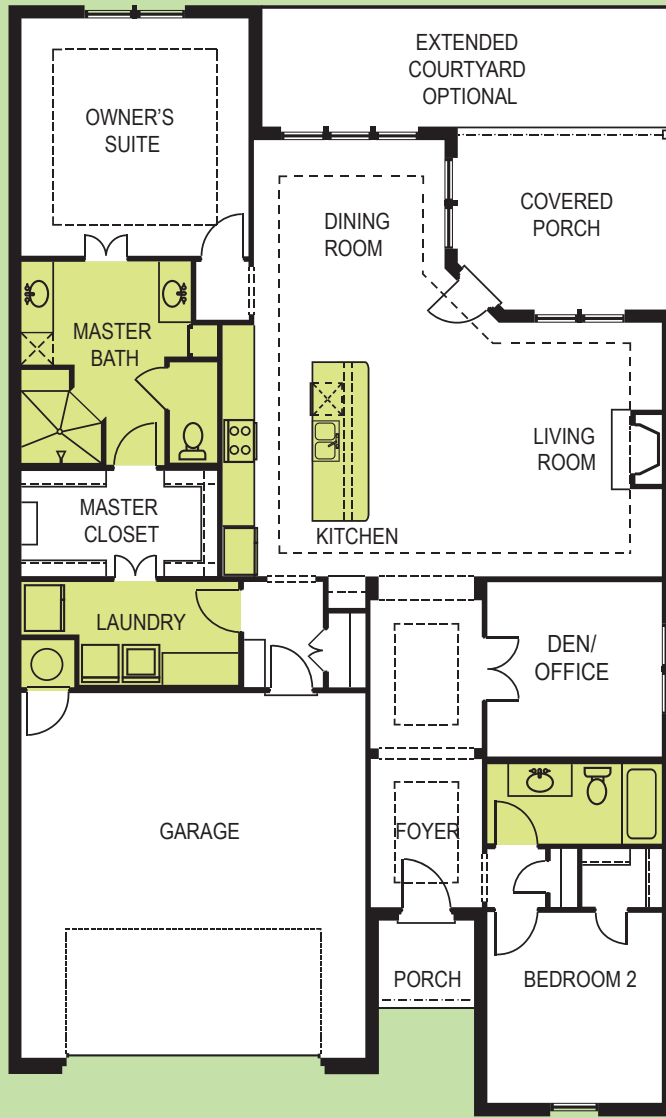


# Torino

2 BEDROOM / 2 BATHROOM / OVER SIZED GARAGE



## Approximate Room Dimensions

Living Room	19' X 16'
Kitchen	15' X 10'
Dining Room	13' X 12'
Owner's Suite	15'6" X 14'6"
Owner's Bath	13' X 12'
Bedroom 2	12' X 11'
Den/Office	11' X 11'
Garage	23'6" X 23'6"

Living Square Footage 1,891

## Home Features

The Rear Courtyard home collection combines the convenience of single-story living with lots of privacy for each resident.

- Nine foot ceilings throughout with Ten foot tray ceilings in certain areas
- Large eat-in kitchen
- Large owner's suite with walk-in closet
- Multiple flooring options available
- Courtyard views from dining room, kitchen, living room, and owner's suite optional
- Optional screened or covered porch, or expanded owner's suite
- Extra large garage with storage area above garage
- Optional courtyard features: fire pits, fountains, pavers, trellises, arbors, and outdoor kitchens

Floor plans are for illustration purposes only. Some features and specifications may vary depending on the architectural style.  
© Epcon Communities Franchising, Inc. 2012

